



MONTHLY MEMBERSHIP PROGRESS REPORT

District 9 EC

Results as of: 6/30/2017

GMT: OPEN

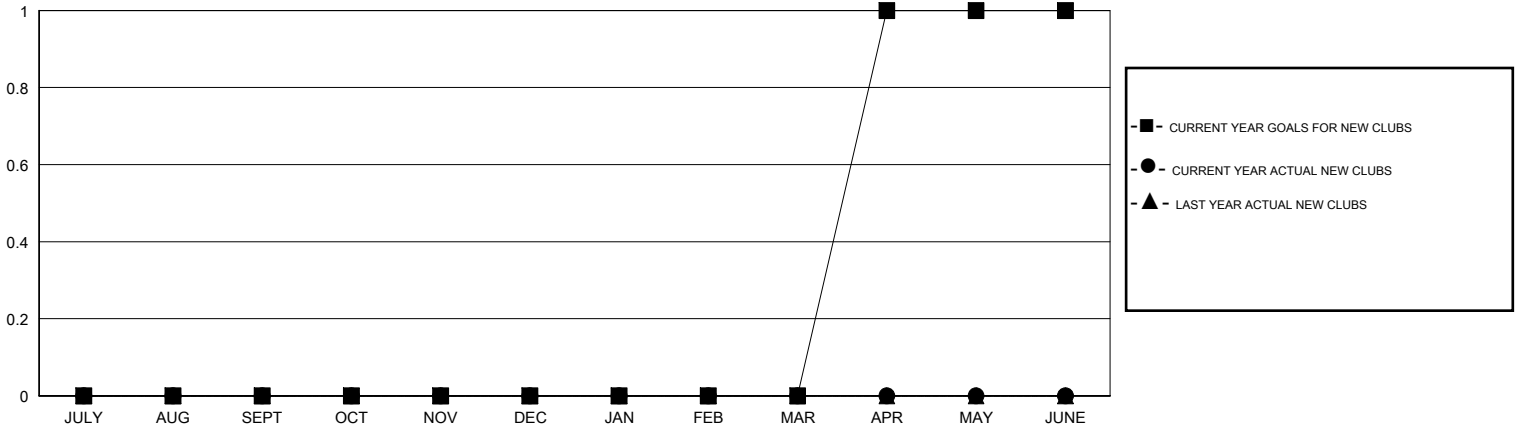
LOCATION IOWA

GMT CA

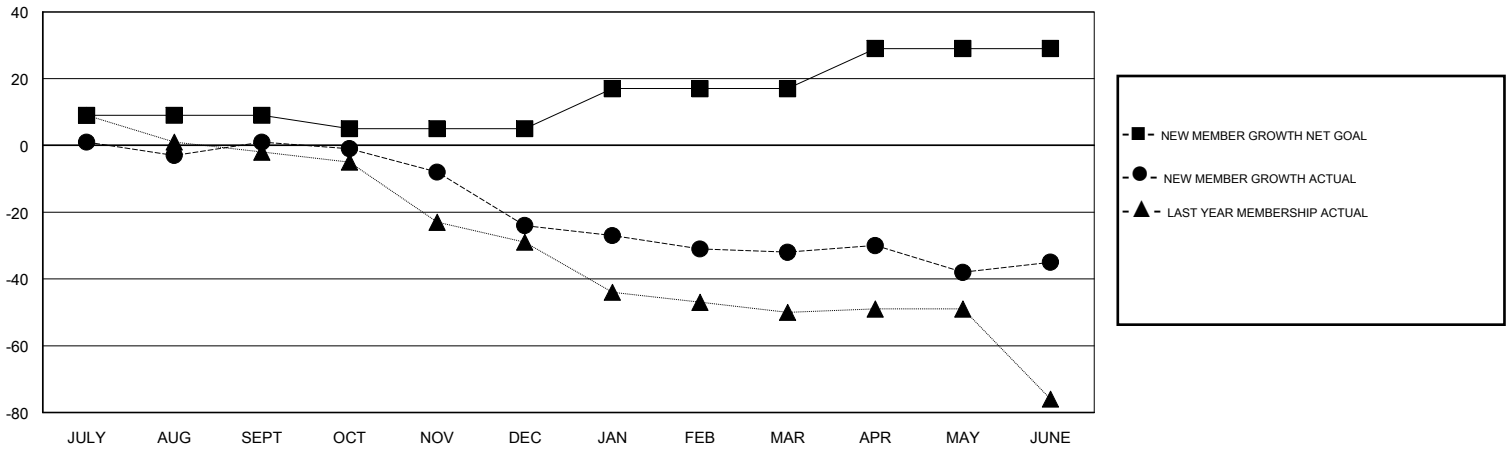
Clubs			
RESULTS FOR 2016-2017			
QUARTER	NEW CLUB GOAL	NEW CLUBS	DROPPED CLUBS
JULY/AUG/SEPT	0	0	0
OCT/NOV/DEC	0	0	0
JAN/FEB/MAR	0	0	0
APR/MAY/JUNE	1	0	1

Members			
RESULTS FOR 2016-2017			
QUARTER	NEW MEMBER GROWTH NET GOAL (not reinstated or transfers)	NEW MEMBER GROWTH ACTUAL (not reinstated or transfers)	DROPPED MEMBERS ACTUAL (including transfers)
JULY/AUG/SEPT	9	38	37
OCT/NOV/DEC	-4	13	38
JAN/FEB/MAR	12	17	25
APR/MAY/JUNE	12	32	35

GOALS AND ACTUAL NEW CLUBS CUMULATIVE



GOALS AND ACTUAL MEMBERS CUMULATIVE



DROPPED CLUBS: 1	32 CLUBS OF 45 ADDED 1 OR MORE NEW MEMBERS	GENDER DISTRIBUTION
		MALE 972 (72.21%)
		FEMALE 374 (27.79%)
DROPPED MEMBERS	CLICK HERE FOR CUMULATIVE MEMBERSHIP DATA	TOTAL FAMILY UNIT MEMBERS 327
DECEASED 18		FAMILY MEMBERS PAYING HALF DUES 166
CLUB CANCELLED 6		
OTHER 111		
TOTAL 135		